

Illustrative photo

Producer: **ECO Modine**Line: **GCE**Model: **GCE 351 E8**Defrost system: **Electric**Heat exchanger coating type: **Aluminium fin**Cooling capacity [kW]: **2.93**Air flow [m<sup>3</sup>/h]: **2,640**Fin spacing [mm]: **8.0**Air throw [m]: **14**Fans [n° x ømm]: **1 x 350**

## Data

### Evaporator technical data

Air flow	[m <sup>3</sup> /h]	2,640
Air throw	[m]	14
Surface internal	[m <sup>2</sup> ]	1.19
Surface external	[m <sup>2</sup> ]	8.30
Inner volume	[dm <sup>3</sup> ]	1.8
Fin spacing	[mm]	8.0
Net weight	[kg]	21

### Fans technical data

Fan quantity		1
Fan diameter	[mm]	350
Fan speed	[RPM]	1,450
Fans power	[W]	185
Fan current	[A]	0.96
Fan power supply		230V/1Ph/50Hz
Fan motor type		AC

### Acoustic data

Acoustic pressure (10m)	[dB(A)]	45.0
Acoustic power	[dB(A)]	76.0

### Connections

Coil connection (inlet)	[mm]	12
Coil connection (outlet)	[mm]	22
Drain connection diameter	[inch]	1

### Defrost

Electric defrost power	[W]	1,750
------------------------	-----	-------

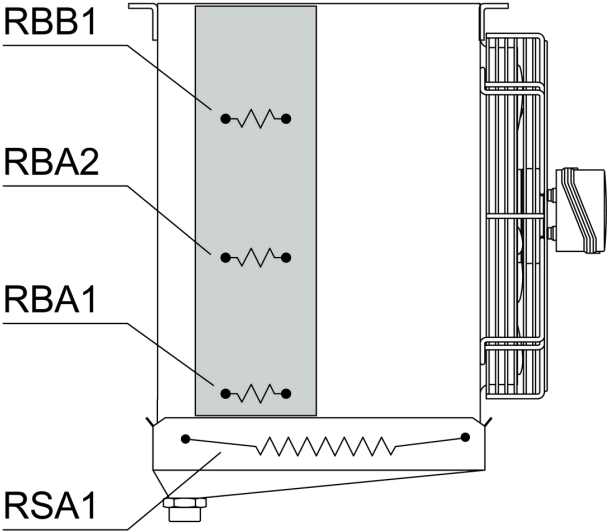
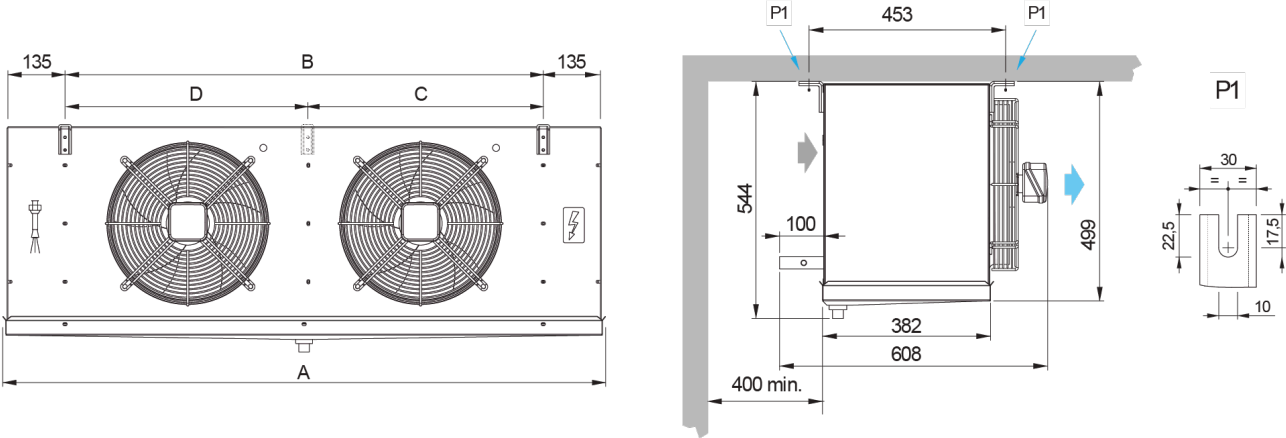
## Performance

Nominal conditions: refrigerant: R404A , evaporation (dew point): -8 °C, inlet air temperature: 0 °C, humidity: 85 %

### Cooling capacity [kW]

		Air inlet temperature [°C]											
		<b>-35</b>	<b>-30</b>	<b>-25</b>	<b>-20</b>	<b>-15</b>	<b>-10</b>	<b>-5</b>	<b>0</b>	<b>2</b>	<b>5</b>	<b>10</b>	<b>12</b>
Temperature difference [K]	<b>4</b>	1.27	1.27	1.29	1.32	1.36	1.39	1.43	1.46	1.56	1.72	1.72	1.72
	<b>5</b>	1.59	1.59	1.61	1.65	1.70	1.74	1.78	1.83	1.96	2.15	2.15	2.15
	<b>6</b>	1.91	1.91	1.93	1.98	2.04	2.09	2.14	2.19	2.35	2.58	2.58	2.58
	<b>7</b>	2.23	2.23	2.25	2.31	2.37	2.44	2.50	2.56	2.74	3.01	3.01	3.01
	<b>8</b>	2.54	2.54	2.57	2.64	2.71	2.78	2.86	2.93	3.13	3.43	3.43	3.43
	<b>9</b>	2.86	2.86	2.89	2.97	3.05	3.13	3.21	3.29	3.52	3.86	3.86	3.86
	<b>10</b>	3.18	3.18	3.22	3.30	3.39	3.48	3.57	3.66	3.91	4.29	4.29	4.29

**Dimensions**



Length	[mm]	875
Width	[mm]	508
Height	[mm]	499
Dimension A	[mm]	875
Dimension B	[mm]	580